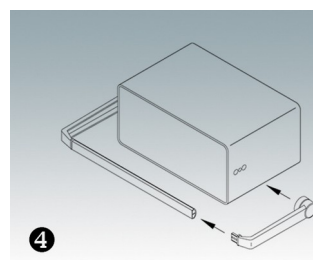
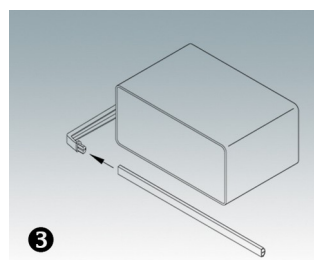
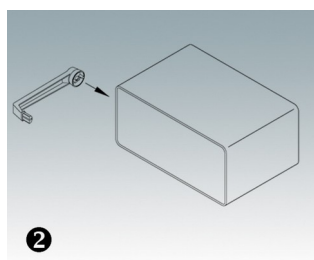
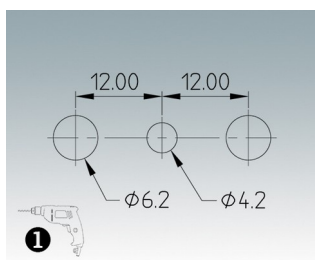
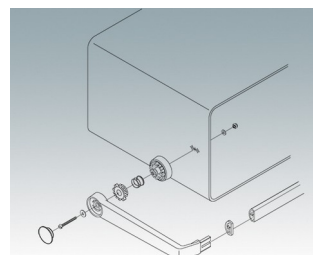
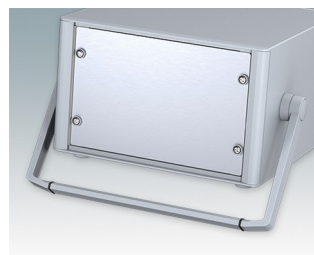
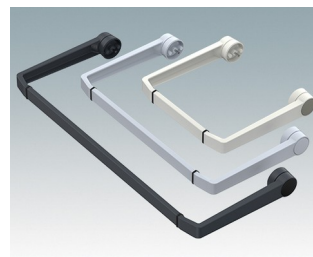
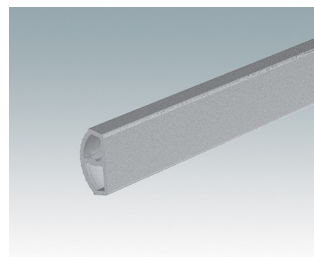
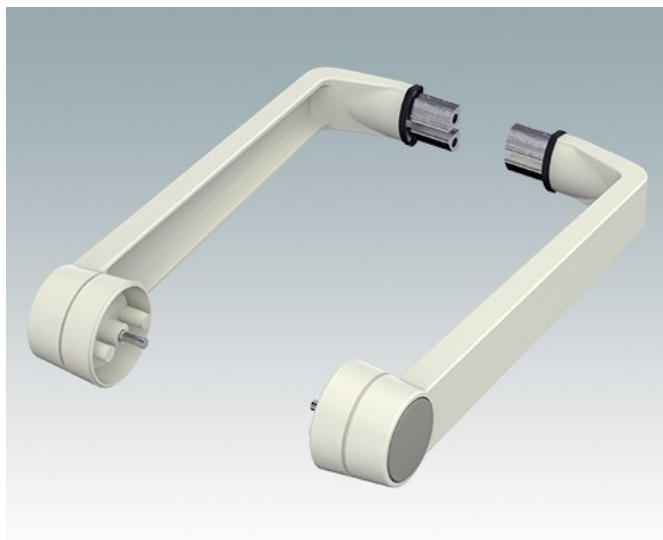
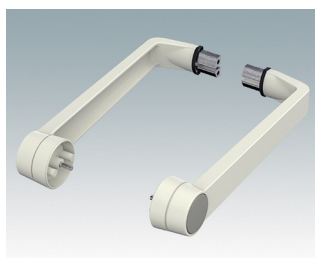


POIGNÉE ÉTRIER UNIVERSELLE

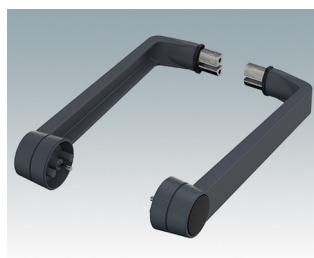
- Poignée étrier en zinc moulé sous pression
- Profilé aluminium correspondant dans la largeur de votre boîtier ; pièce vendue séparément.



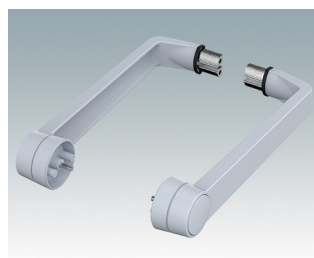
Versions



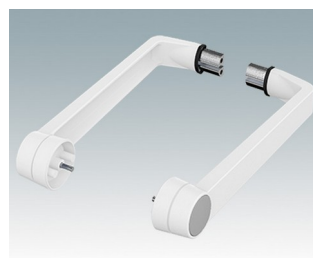
A9300014
Partie latérale
Zinc
Gris blanc RAL 9002



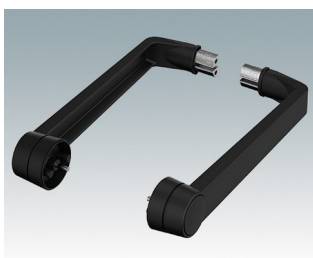
M5093004
Partie latérale
Zinc
Anthracite RAL 7016



M5093005
Partie latérale
Zinc
Gris clair RAL 7035

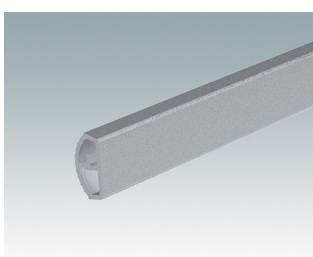


M5093006
Partie latérale
Zinc
Blanc signalisation RAL 9016

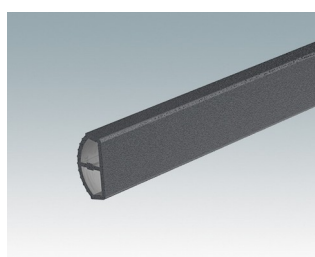


M5093009
Partie latérale
Zinc
Noir RAL 9005

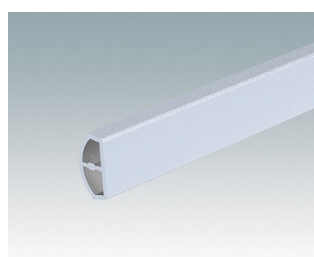
Composants du système pour compléter



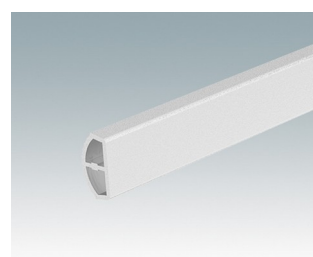
M50930-xxx
Profilé de poignée, RAL 9006
Aluminium
Aluminium blanc RAL 9006



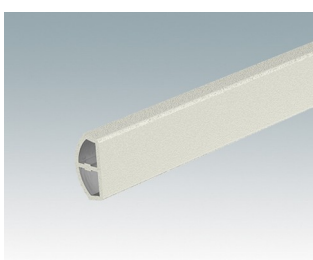
M50934-xxx
Profilé de poignée, RAL 7016
Aluminium
Anthracite RAL 7016



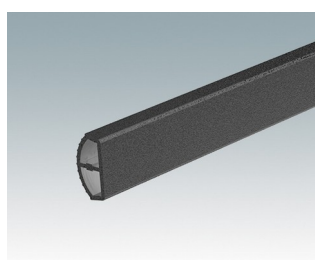
M50935-xxx
Profilé de poignée, RAL 7035
Aluminium
Gris clair RAL 7035



M50936-xxx
Profilé de poignée, RAL 9016
Aluminium
Blanc signalisation RAL 9016



M50937-xxx
Profilé de poignée, RAL 9002
Aluminium
Gris blanc RAL 9002



M50939-xxx
Profilé de poignée, RAL 9005
Aluminium
Noir RAL 9005

Sous réserve de modifications techniques. © OKW Enclosures Ltd