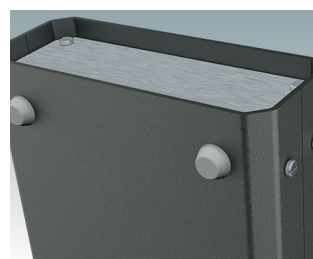
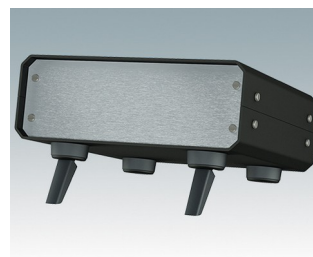
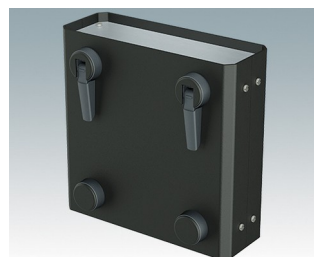
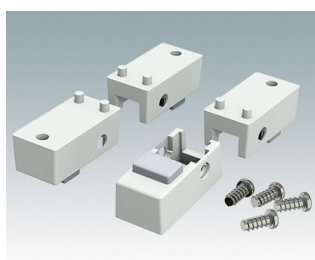


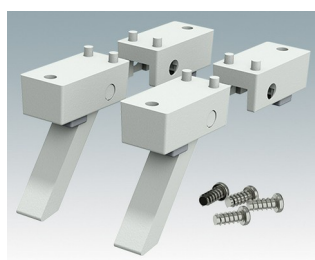
- Pieds universels pour boîtiers en métal ou plastique
- **Technofeet** - pieds ronds en plastique, élégants et modernes, basculables ou fixes
- **Pieds de boîtier** - robustes pieds en plastique basculables ou fixes
- Pieds en caoutchouc antiglisse et auto-adhésifs
- Pieds en caoutchouc antiglisse à insérer



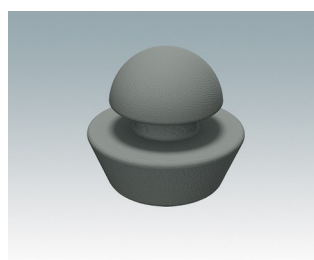
## Versions



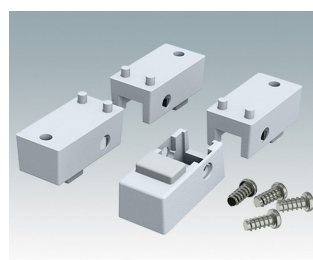
**A9257107**  
Pieds du boîtier, kit 1  
ABS (UL 94 HB)  
Gris blanc RAL 9002  
34x17x16mm



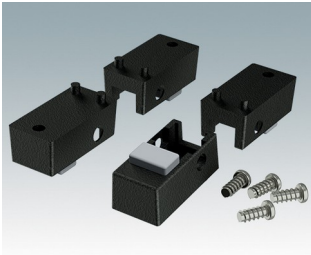
**A9257207**  
Pieds du boîtier, kit 2  
ABS (UL 94 HB)  
Gris blanc RAL 9002  
34x17x16mm



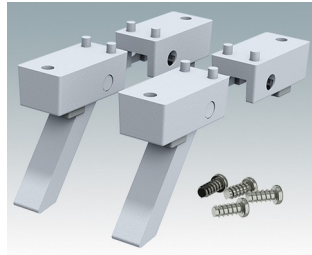
**M5403002**  
Pied en caoutchouc  
Caoutchouc  
Gris  
12,7x12,7x5mm



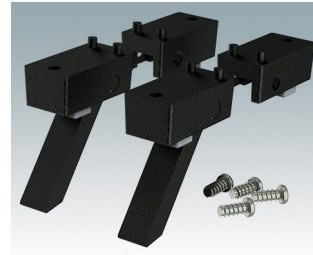
**M5600015**  
Pieds du boîtier, kit 1  
ABS (UL 94 HB)  
Gris clair RAL 7035  
34x17x16mm



**M5600019**  
Pieds du boîtier, kit 1  
ABS (UL 94 HB)  
Noir RAL 9005  
34x17x16mm



**M5600045**  
Pieds du boîtier, kit 2  
ABS (UL 94 HB)  
Gris clair RAL 7035  
34x17x16mm



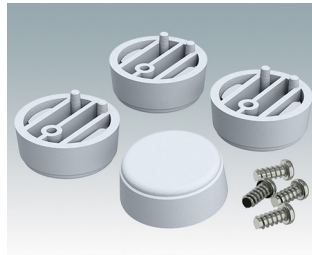
**M5600049**  
Pieds du boîtier, kit 2  
ABS (UL 94 HB)  
Noir RAL 9005  
34x17x16mm



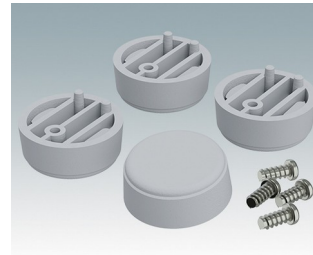
**M5600100**  
Pieds anti-glissant  
Caoutchouc  
Transparent  
12,6x12,6x5,7mm



**M6420104**  
Technofeet kit 1, pieds du boîtier  
ABS (UL 94 HB)  
Anthracite RAL 7016  
30x30x12mm



**M6420105**  
Technofeet kit 1, pieds du boîtier  
ABS (UL 94 HB)  
Gris clair RAL 7035  
30x30x12mm



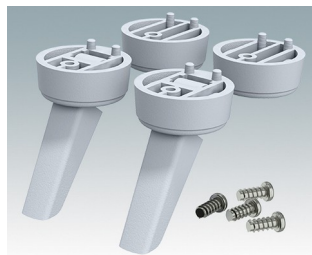
**M6420106**  
Technofeet kit 1, pieds du boîtier  
ABS (UL 94 HB)  
Gris signalisation A RAL 7042  
30x30x12mm



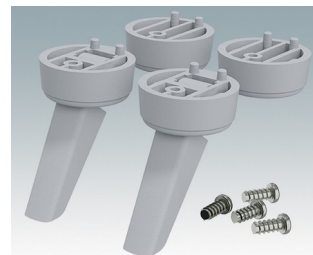
**M6420109**  
Technofeet kit 1, pieds du boîtier  
ABS (UL 94 HB)  
Noir RAL 9005  
30x30x12mm



**M6420204**  
Technofeet kit 2, pieds du boîtier  
ABS (UL 94 HB)  
Anthracite RAL 7016  
30x30x12mm



**M6420205**  
Technofeet kit 2, pieds du boîtier  
ABS (UL 94 HB)  
Gris clair RAL 7035  
30x30x12mm



**M6420206**  
Technofeet kit 2, pieds du boîtier  
ABS (UL 94 HB)  
Gris signalisation A RAL 7042  
30x30x12mm



**M6420209**  
Technofeet kit 2, pieds du boîtier  
ABS (UL 94 HB)  
Noir RAL 9005  
30x30x12mm

Sous réserve de modifications techniques. © OKW Enclosures Ltd