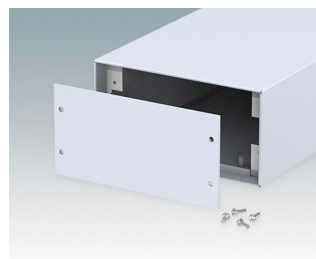
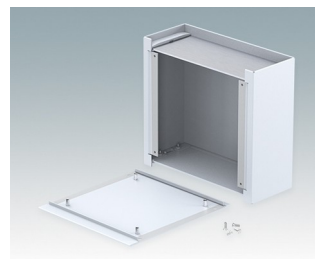
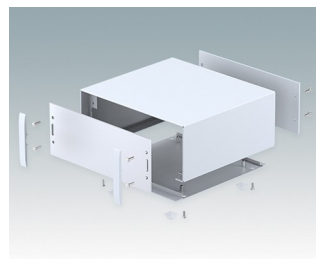


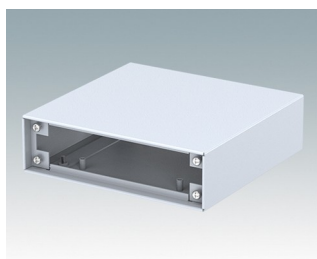
## Pour petits équipements électroniques de table et portables

- Boîtiers pour instruments compacts en aluminium en huit tailles standard
- Design élégant, léger et polyvalent, technique d'assemblage simple et rapide
- Plaque inférieure amovible pré-équipée de quatre inserts de montage M3 pour cartes
- Accessoires: plaques avant et arrière en aluminium anodisé et plaques avant et arrière peintes
- Plaques avant encastrées de 8 mm ou 14 mm
- Quatre pieds antiglisse auto-adhésifs inclus

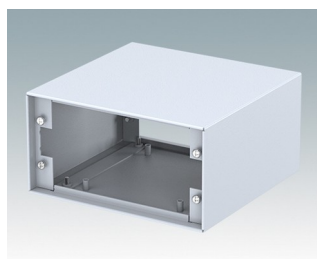
Commandez votre version entièrement personnalisée. [En savoir plus >>](#)



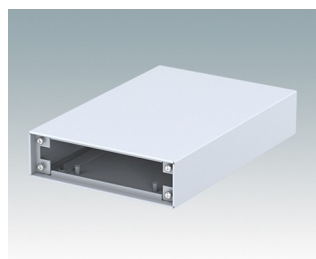
## Versions



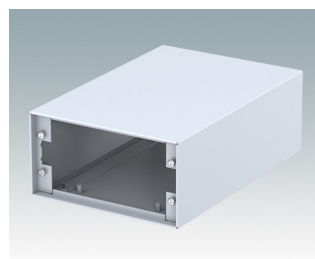
**M5113115**  
MINIMET 1  
Aluminium  
Gris clair RAL 7035  
134,5x130x38,5mm



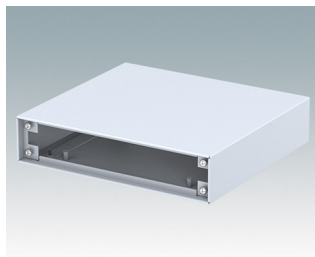
**M5113125**  
MINIMET 2  
Aluminium  
Gris clair RAL 7035  
134,5x130x70mm



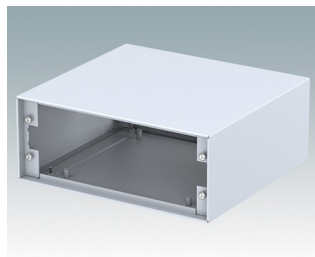
**M5113215**  
MINIMET 3  
Aluminium  
Gris clair RAL 7035  
134,5x200x38,5mm



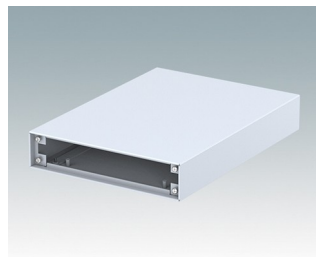
**M5113225**  
MINIMET 4  
Aluminium  
Gris clair RAL 7035  
134,5x200x70mm



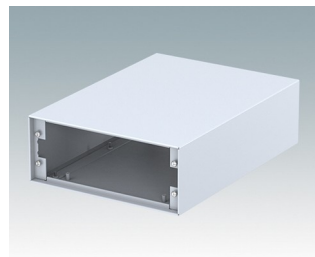
**M5117115**  
MINIMET 5  
Aluminium  
Gris clair RAL 7035  
174,5x160x38,5mm



**M5117125**  
MINIMET 6  
Aluminium  
Gris clair RAL 7035  
174,5x160x70mm

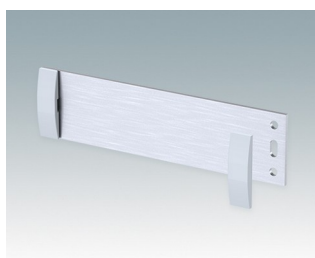


**M5117215**  
MINIMET 7  
Aluminium  
Gris clair RAL 7035  
174,5x240x38,5mm

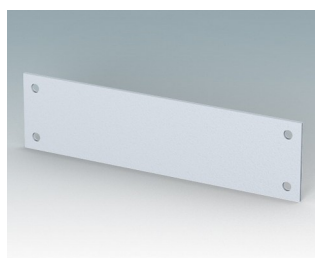


**M5117225**  
MINIMET 8  
Aluminium  
Gris clair RAL 7035  
174,5x240x70mm

## Accessoires



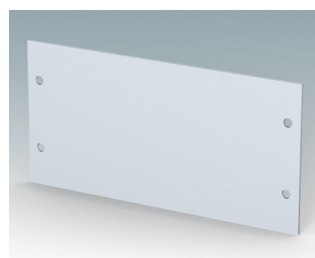
**M5100510**  
Kit de plaque avant/arrière AN  
(taille 1 et 3)  
Aluminium  
Anodisé mat  
129,5x2x33,6mm



**M5100515**  
Plaque avant/arrière PN (taille 1  
et 3)  
Aluminium  
Gris clair RAL 7035  
129,5x1,5x33,6mm



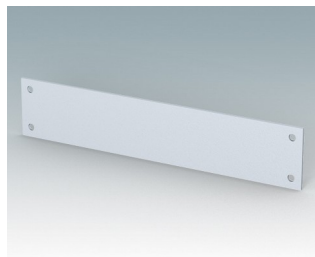
**M5100520**  
Kit de plaque avant/arrière AN  
(taille 2 et 4)  
Aluminium  
Anodisé mat  
129,5x2x65,1mm



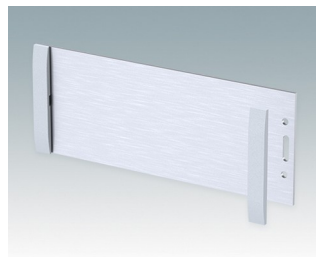
**M5100525**  
Plaque avant/arrière PN (taille 2  
et 4)  
Aluminium  
Gris clair RAL 7035  
129,5x1,5x65,1mm



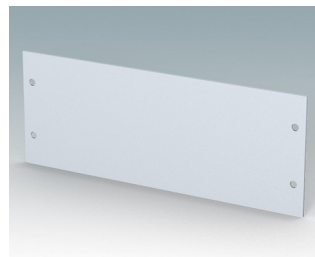
**M5100550**  
Kit de plaque avant/arrière AN  
(taille 5 et 7)  
Aluminium  
Anodisé mat  
169,5x2x33,6mm



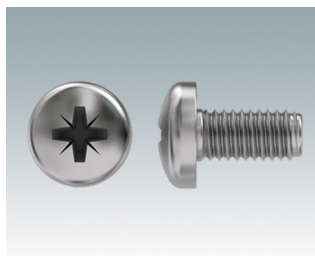
**M5100555**  
Plaque avant/arrière PN (taille 5  
et 7)  
Aluminium  
Gris clair RAL 7035  
169,5x1,5x33,6mm



**M5100560**  
Kit de plaque avant/arrière AN  
(taille 6 et 8)  
Aluminium  
Anodisé mat  
169,5x2x65,1mm



**M5100565**  
Plaque avant/arrière PN (taille 6  
et 8)  
Aluminium  
Gris clair RAL 7035  
169,5x1,5x65,1mm



**M5600010**  
Vis de fixation du circuit imprimé,  
M3  
Acier  
Zingué  
6mm