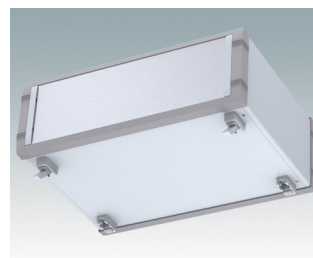
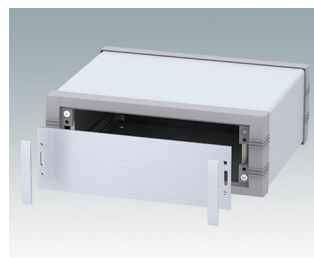
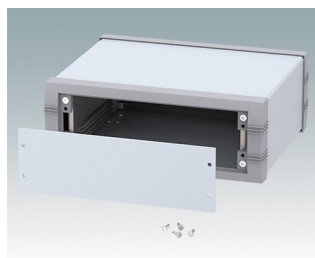
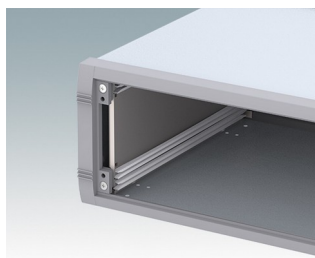
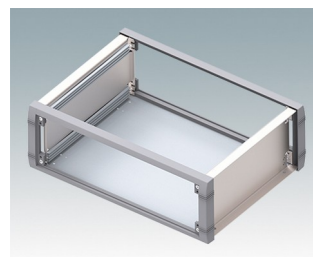
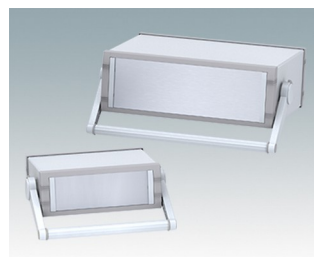
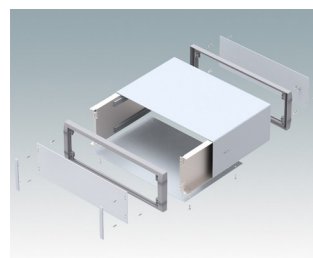
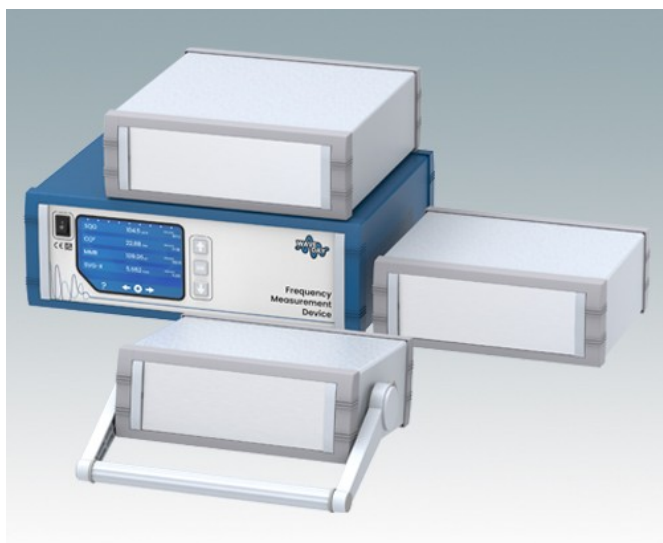


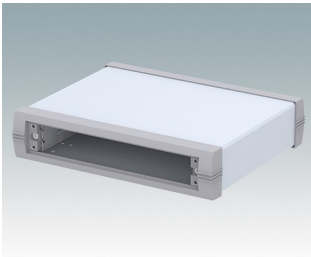
## Boitiers pour instruments élégants et polyvalents

- Boitiers pour instruments modernes en aluminium avec ou sans poignée étrier basculable/pivotante
- Design robuste et polyvalent en six tailles
- Châssis interne avec positions de guides horizontales insertion de cartes
- Quatre guide-cartes en polyamide compris
- Élégants cadres frontal et arrière moulés sous pression fixés au corps de boîtier en aluminium plié
- Plaque arrière amovible encastrée pour protéger connecteurs, commutateurs, etc.
- Plaques avant en aluminium encastrée (accessoire)
- Quatre pieds en caoutchouc antiglisse compris
- Pieds basculables moulé disponibles en accessoire

Commandez votre version entièrement personnalisée. [En savoir plus >>](#)



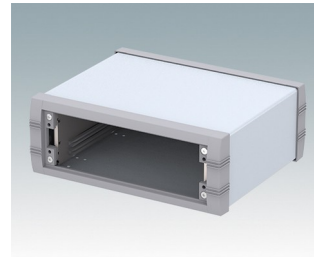
## Versions



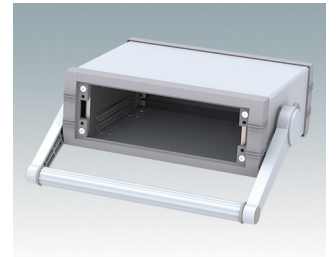
**M5623015**  
UNIMET-PLUS 1  
Aluminium  
Gris clair/gris fenêtre RAL  
7035/7040  
230x193x50mm



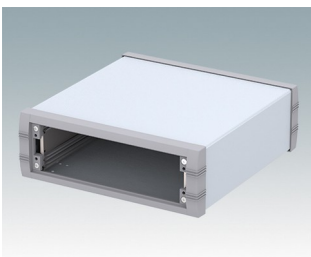
**M5623035**  
UNIMET-PLUS 1H  
Aluminium  
Gris clair/gris fenêtre RAL  
7035/7040  
230x193x50mm



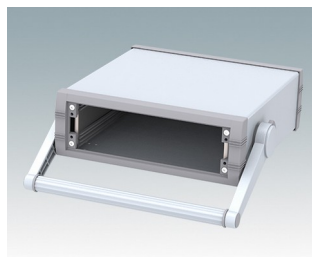
**M5623115**  
UNIMET-PLUS 2  
Aluminium  
Gris clair/gris fenêtre RAL  
7035/7040  
230x193x85mm



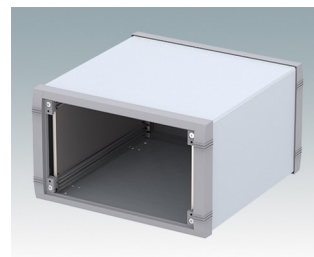
**M5623135**  
UNIMET-PLUS 2H  
Aluminium  
Gris clair/gris fenêtre RAL  
7035/7040  
230x193x85mm



**M5625115**  
UNIMET-PLUS 3  
Aluminium  
Gris clair/gris fenêtre RAL  
7035/7040  
250x263x85mm



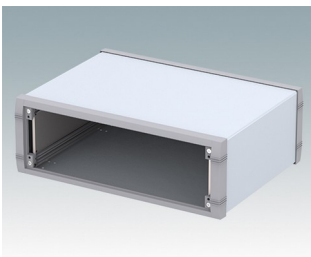
**M5625135**  
UNIMET-PLUS 3H  
Aluminium  
Gris clair/gris fenêtre RAL  
7035/7040  
250x263x85mm



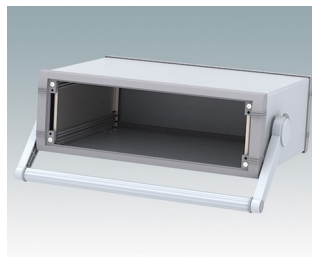
**M5625315**  
UNIMET-PLUS 5  
Aluminium  
Gris clair/gris fenêtre RAL  
7035/7040  
250x263x150mm



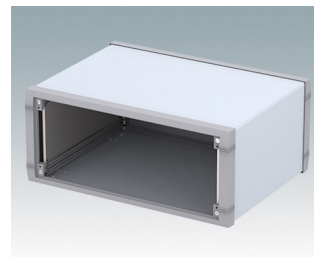
**M5625335**  
UNIMET-PLUS 5H  
Aluminium  
Gris clair/gris fenêtre RAL  
7035/7040  
250x263x150mm



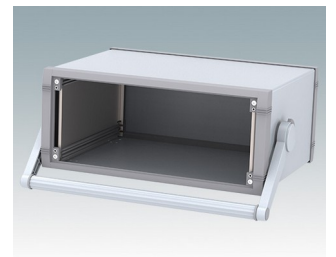
**M5635215**  
UNIMET-PLUS 4  
Aluminium  
Gris clair/gris fenêtre RAL  
7035/7040  
350x263x120mm



**M5635235**  
UNIMET-PLUS 4H  
Aluminium  
Gris clair/gris fenêtre RAL  
7035/7040  
350x263x120mm

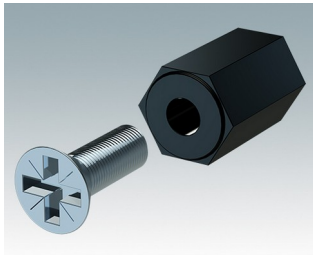


**M5635315**  
UNIMET-PLUS 6  
Aluminium  
Gris clair/gris fenêtre RAL  
7035/7040  
350x263x150mm

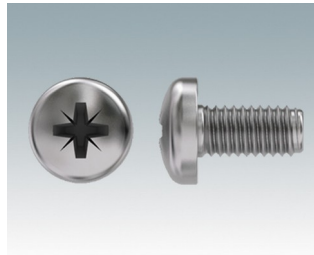


**M5635335**  
UNIMET-PLUS 6H  
Aluminium  
Gris clair/gris fenêtre RAL  
7035/7040  
350x263x150mm

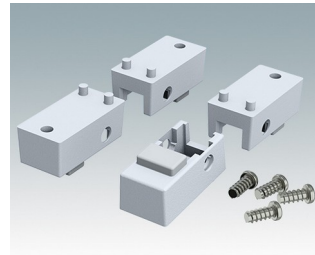
## Accessoires



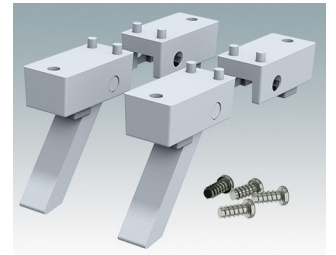
**M5600001**  
Jeu pour montage des circuits imprimés  
PA 6  
Noir RAL 9005



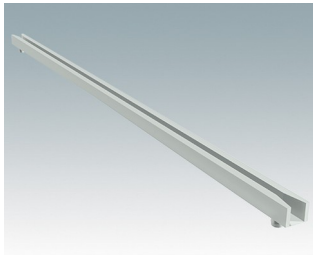
**M5600010**  
Vis de fixation du circuit imprimé, M3  
Acier  
Zingué  
6mm



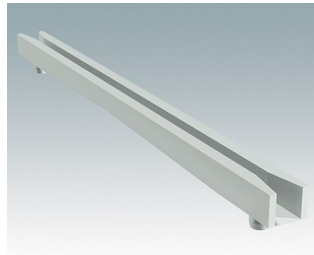
**M5600015**  
Pieds du boîtier, kit 1  
ABS (UL 94 HB)  
Gris clair RAL 7035  
34x17x16mm



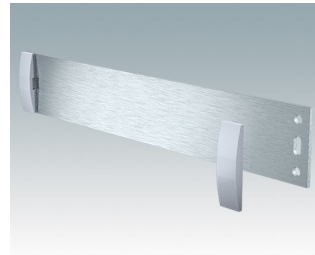
**M5600045**  
Pieds du boîtier, kit 2  
ABS (UL 94 HB)  
Gris clair RAL 7035  
34x17x16mm



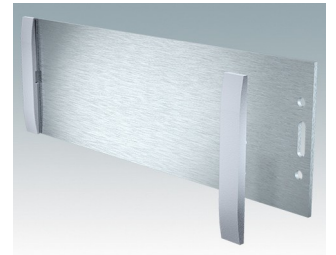
**M5700202**  
Guide-carte, 216mm  
PA 6/6 (UL 94 V-2)  
Blanc



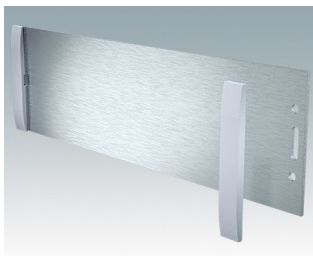
**M5700203**  
Guide-carte, 102mm  
PA 6/6 (UL 94 V-2)  
Blanc



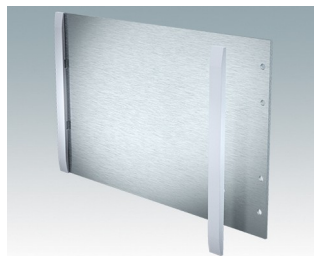
**M5700607**  
Kit de plaque avant (1/1H)  
Aluminium  
Anodisé mat  
199,5x2x33,6mm



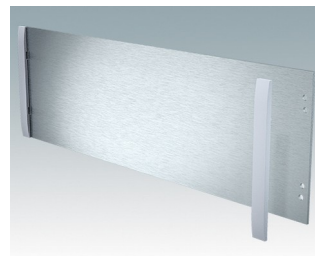
**M5700608**  
Kit de plaque avant (2/2H)  
Aluminium  
Anodisé mat  
199,5x2x65,1mm



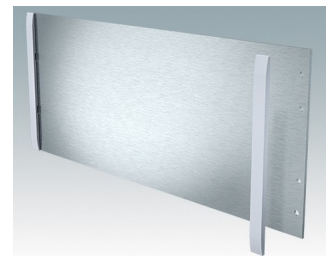
**M5700613**  
Kit de plaque avant (3/3H)  
Aluminium  
Anodisé mat  
219,5x2x65,1mm



**M5700616**  
Kit de plaque avant (5/5H)  
Aluminium  
Anodisé mat  
219,5x2x130,1mm



**M5700620**  
Kit de plaque avant (4/4H)  
Aluminium  
Anodisé mat  
319,5x2x100,1mm



**M5700621**  
Kit de plaque avant (6/6H)  
Aluminium  
Anodisé mat  
319,5x2x130,1mm

Sous réserve de modifications techniques. © OKW Enclosures Ltd